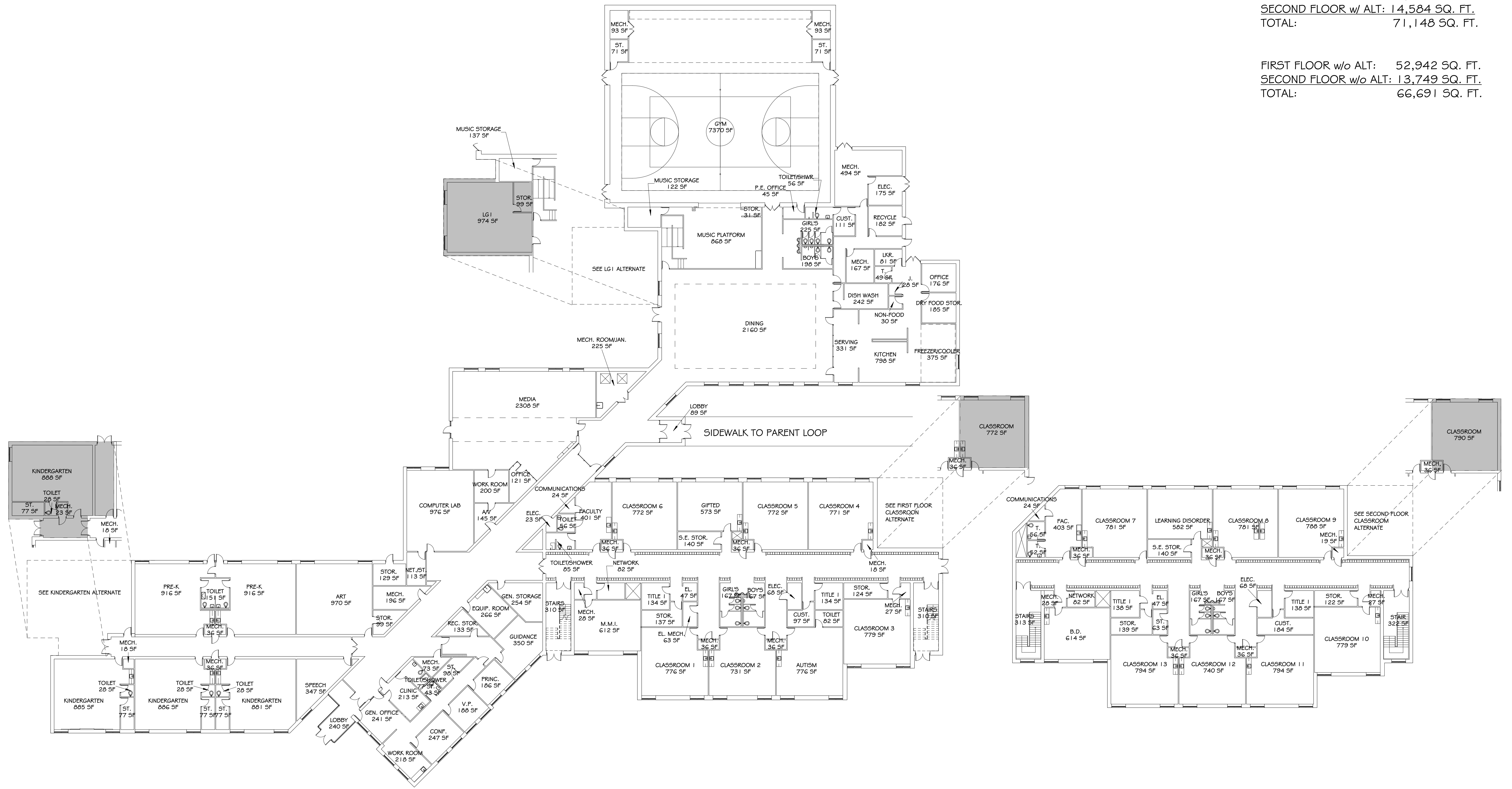


FIRST FLOOR w/ ALT: 56,564 SQ. FT.  
 SECOND FLOOR w/ ALT: 14,584 SQ. FT.  
 TOTAL: 71,148 SQ. FT.

FIRST FLOOR w/o ALT: 52,942 SQ. FT.  
 SECOND FLOOR w/o ALT: 13,749 SQ. FT.  
 TOTAL: 66,691 SQ. FT.



FIRST FLOOR

SECOND FLOOR

# Eastwood Elementary School

Schematic Floor Plans  
 Monongalia County Board of Education  
 12/28/2010

Scale:  
 1" = 20'-0"



Page:  
**WILLIAMSON**  
**SHRIVER**  
**ARCHITECTS**

717 Bigley Avenue, Charleston, WV 25302  
 p. 304.345.1060 f. 304.345.3693 www.wsgarch.com

© 2010 Williamson Shriver Architects, Inc.



## Program Areas

### Eastwood Elementary School Monongalia County Schools

December 29, 2010

Grade Configuration K4 thru Grade 5

Design Enrollment 450 x 112 sf/student

**50,400** SF per SBA

**66,516** SF per Program Area  
(16,116)

#### Pre-School - Handicapped / Special Needs

**9,428**

##### Early Childhood Ed. - PK4/Headstart

**2,112**

Classroom	2 @	916	1,832
Toilet	1 @	151	151
Outside Storage	1 @	129	129

##### Early Childhood Ed. - K5

**2,911**

Classroom	3 @	884	2,652
Storage	3 @	77	231
Toilet	3 @	28	28

##### Support Services

**4,405**

##### Special Education

Speech	1 @	347	347
LD	1 @	573	573
Autism	1 @	776	776
Autism restroom	1 @	82	82
BD Classroom	1 @	619	619
Mildly Mentally Impaired	1 @	619	619
Gifted	1 @	573	573
Storage	2 @	140	280

##### Title I

Small Group Study	4 @	134	536
-------------------	-----	-----	-----

#### Elementary

**10,674**

##### Primary Classrooms

**10,674**

Classrooms	13 @	775	10,075
Storage	2 @	124	248
Storage	2 @	144	288
Storage	1 @	63	63

**Core Educational Support Areas****16,793**

<b>Administration</b>				<b>1,221</b>
General Office / Waiting	1	@	241	241
Work Room / Storage	1	@	218	218
Principal Office	1	@	186	186
Vice Principal Office	1	@	188	188
Conference Room	1	@	247	247
Toilet	1	@	43	43
Storage	1	@	98	98
<b>Student Services</b>				<b>773</b>
Guidance Office	1	@	350	350
Records Storage	1	@	133	133
Health Clinic	1	@	213	213
Toilet	1	@	77	77
<b>Faculty</b>				<b>1,084</b>
Planning / Work	2	@	395	790
Toilet	3	@	53	159
Shower / Lockers	1	@	87	87
Communications	2	@	24	48
<b>Music</b>				<b>1,249</b>
Music Classroom / Platform	1	@	880	880
Partition Storage	1	@	28	28
Storage	1	@	141	141
Ramp	1	@	200	200
<b>Art</b>				<b>1,074</b>
Art Classroom	1	@	970	975
Storage	1	@	99	99
<b>Media Center</b>				<b>2,774</b>
Media Center w/Book Room Shelving /Circ Desk	1	@	2308	2,308
Office	1	@	121	121
A/V Storage	1	@	145	145
Work Room	1	@	200	200
<b>Computer</b>				<b>1,089</b>
Computer Lab	1	@	976	976
Storage	1	@	113	113
<b>Physical Education</b>				<b>7,529</b>
Gymnasium - 50 x 84 Court	1	@	4200	4,200
Aisles / out of bounds	1	@	1415	1,415
Bleachers (seating for)	450	@	3.84	1,729
Office	1	@	49	49
Storage	2	@	68	136

**Core / Building Support Areas**

11,020

**Food Service**

4,861

Commons / Dining Room	200 @	10.8	2,160
Toilets	2 @	208	416
Food Preparation Area	1 @	798	798
Serving	1 @	326	326
Dry Food Storage (4 deliveries per wk)	1 @	185	185
Walk-in Cooler/Freezer (4 deliveries per wk)	2 @	188	375
Dishwashing	1 @	237	237
Non-Food Storage	1 @	30	30
Office	1 @	176	176
Janitor	1 @	28	28
Locker Room	1 @	81	81
Toilets	1 @	49	49

**Building Services**

6,159

Mechanical Room	1 @	475	475
Mechanical Closets			
Administrative	1 @	73	73
Classrooms	17 @	36	612
Computer/Art	1 @	196	196
Commons / Dining	1 @	160	160
Media Center	1 @	225	225
Gymnasium	2 @	95	190
HVAC Chases	4 @	40	160
Janitorial	2 @	149.5	299
Electrical Equip. Room	1 @	175	175
Electrical Closets	2 @	68	136
Electrical Closets	1 @	21	21
Network Closets	2 @	82	164
General Storage	1 @	254	254
Custodian Office	1 @	117	117
Toilet / Shower	1 @	60	60
Equipment Storage, carts, scrubbers	1 @	266	266
Toilets	4 @	167	668
Stairs	4 @	310	1,240
Lobby	1 @	240	240
Lobby	1 @	89	89
Elevator (1 per floor)	2 @	47	94
Elevator Equipment Room	1 @	63	63
Recycle Room	1 @	182	182

**Sub-Total**

47,916

**Building Efficiency**

38.82%

18,600

**Total**

66,516

## **Alternate Spaces**

**3,633**

### **Early Childhood Ed. - K5**

Classroom	1 @	888	888
Storage	1 @	77	77
Toilet	1 @	28	28
Mechanical	1 @	23	23

**1,016**

### **Primary Classrooms**

Classrooms	2 @	772	1,544
------------	-----	-----	-------

**1,544**

### **LGI**

Classrooms	1 @	974	974
Storage	1 @	99	99

**1,073**

### **Building Efficiency**

**823**

### **Total All Alternates**

**4,456**

### **Total Including Alternates**

**70,972**